

ME-T Turbine Water Meters - ANSI 150# Flanged



Description

Register

The combined gear and register unit is fully sealed with a straight odometer for visual reading of billable units as well as high-precision pointers for accurate testing by governing agencies. Both the register and pulse unit are pit rated to IP68 (NEMA 6). The serial number is clearly marked.

Main Casing

The turbine main casing is made of Cast Iron with epoxy coating.

Measuring Chamber

The measuring chamber and turbine element are constructed from durable engineered plastics and the meter has inlet straightening vanes along with stainless steel spindles for superior longevity.

Application

For use in measurement of potable cold water in commercial and industrial applications where flow is in one direction only. Ideal for high volume applications where space is cramped.

Features

- Meets or exceeds AWWA C701 Class II accuracy
- Remote ready, includes pit pulse
- Rated to 120°F and 200 psi
- Large numbers for easy reading
- Glass lens resists scratching
- Epoxy coated Cast Iron casing
- 1-year new meter accuracy warranty
- 5-year standard warranty for casing, register, and accuracy (AWWA C701)
- 1 pulse = 100 US Gallons or 10 Cubic Feet (std)

Specifications

Pressure: up to 200 PSIG

Temperature: 122°F (cold) / 194°F (hot)

Maximum Reading:

US Gallon models: 999,999,999

Cubic Feet models: 99,999,999

Accuracy:

Normal flow: +/- 1.5%

Pulse Output Standard on All Models

Sensor Type: Dry contact Reed switch

Pulse Rates:

US Gallon models: 1 pulse per 100 Gallons

Max. Current: 100mA

Max. Voltage: 24 VAC/DC

Cable Length: 9' standard (2000' maximum run)

Installation

It is highly recommended that a Z-plate strainer be used upstream of the meter for protection to the turbine impeller and to reduce effects of turbulence. Industry Standards recommend horizontal installation with 10 pipe diameters upstream of the meter (if a strainer is not used) and 5 pipe diameters downstream. The lack of a strainer may void the warranty of the Turbine meter. LF bronze companion flanges are available for all sizes.

ME-T Turbine Water Meters - ANSI 150# Flanged

Z-Plate Strainer (recommended)

It is strongly recommended to install a strainer upstream from the meter.



Model Code for Ordering

ME-T-300F-R/100G

Water Meter _____
ME = M & E (Meters & Electronics)

Meter Type _____
T = Turbine (cold)
TH = Turbine (hot)

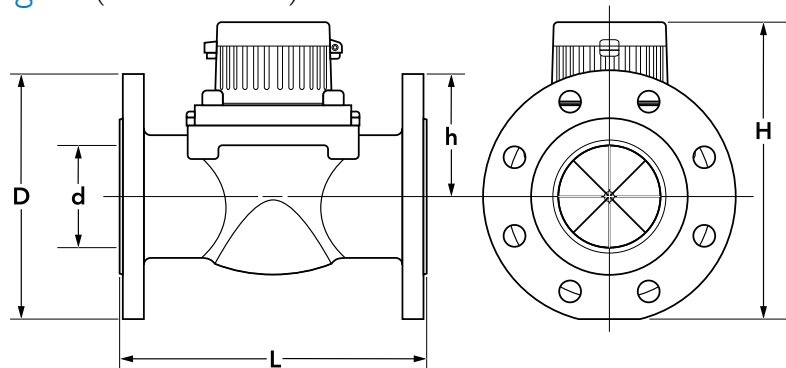
Size _____
300F = 3" ANSI 150# 4-bolt flange
400F = 4" ANSI 150# 8-bolt flange
600F = 6" ANSI 150# 8-bolt flange

Pulse Output and Units of Measure _____
R/100G = 1 pulse per 100 gallons
R/10CF = 1 pulse per 10 cubic feet

Sizes & Flow Rates [in gpm]

Size	Normal	Low	Max. Continuous	Max. Intermittent
300F	4 - 650 (0.53 - 86.9)	8	650	812
400F	4.8 - 800 (0.64 - 106.9)	15	800	1,000
600F	9.6 - 1600 (1.28 - 213.9)	30	1,600	2,000

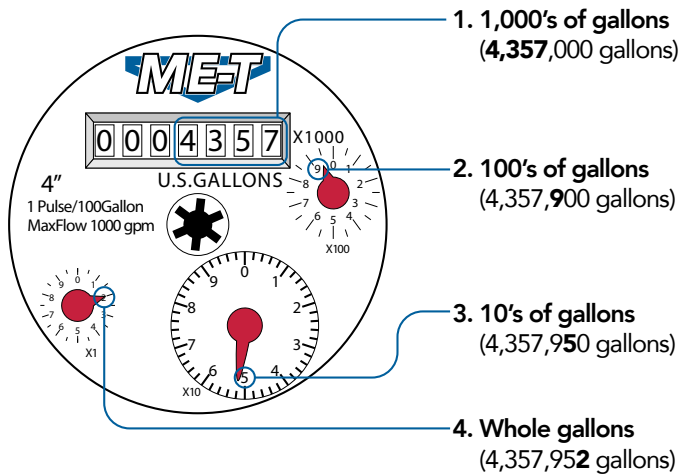
Dimensions & Weights (in inches & lbs.)



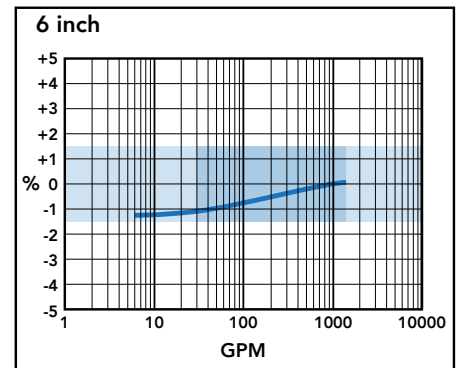
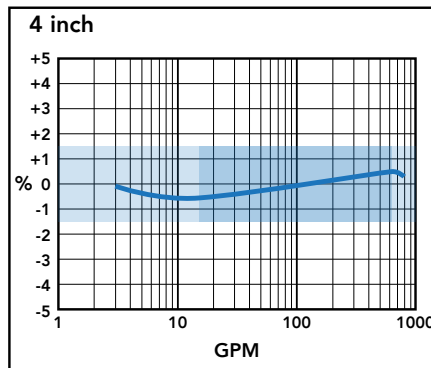
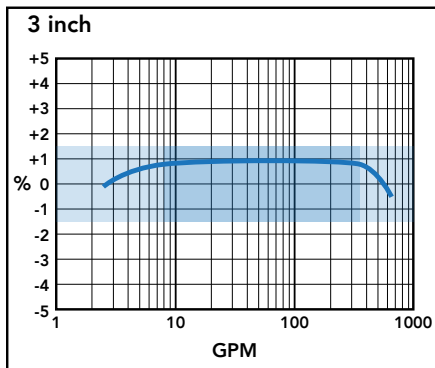
Size	Model (Cold/Hot)	L	D	d	H	h	# holes	Weight
3"	ME-T-300-300F-...	8.9	8.0	3.15	9.8	6.1	4	29 lbs.
	ME-TH-300-300F-...							
4"	ME-T-400-300F-...	9.8	8.7	3.9	10.2	6.1	8	33 lbs.
	ME-TH-400-300F-...							
6"	ME-T-600-300F-...	11.8	11.125	5.9	12.4	7.2	8	69 lbs.
	ME-TH-600-300F-...							

ME-T Turbine Water Meters - ANSI 150# Flanged

Reading the Meter



Accuracy Curves



Pressure Loss Curves

