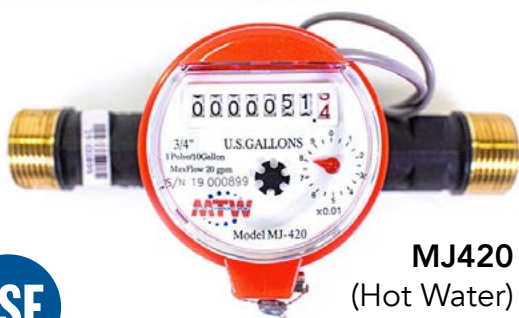


MJ20 & MJ420 Multi-jet Water Meters



MJ20
(Cold Water)



MJ420
(Hot Water)



Certified to
NSF/ANSI 61-G

Description

For use in submetering applications where compact size and pulse output are desired. The MTW MJ20/MJ420 multi-jet water meter uses a polymer casing design to allow for low weight and reduced cost but augments the meter with brass threads to reduce the likelihood of stripped threads during installation. The MJ20/MJ420 meet NSF/ANSI 61 and 372 standards. The MTW MJ20/MJ420 may be installed either horizontally or vertically.

**Accurate in
Horizontal AND Vertical
Orientation**

Features

- Accurate measurement in any orientation
- Poly body with brass threads
- Pulse output 1/10 gal
- Sealed register for tamper resistance
- Meets AWWA C708 performance
- NSF/ANSI 61 and NSF/ANSI 372
- Quiet operation
- High-temperature (fiber) gaskets on MJ420 models
- 1 year new meter accuracy warranty
- 5 year standard warranty for body, register, and accuracy (AWWA C708)

Specifications

Pressure: up to 150 PSIG

Temperature: MJ20 up to 105°F; MJ420 up to 194°F

Normal Flow Range: 1 to 20 gpm (+/- 1.5%)

Low Flow: 1/4 gpm (+/- 3%)

Maximum Continuous Flow: 15 gpm

Maximum Operating Capacity: 20 gpm

Maximum Reading: 9,999,999.99 US Gallons

Accuracy: Normal flow: +/- 1.5%; Low flow: +/- 3%

Pulse Output Standard on All Models

Sensor Type: Dry contact Reed switch

Pulse Rates: 1 pulse per 10 Gallons

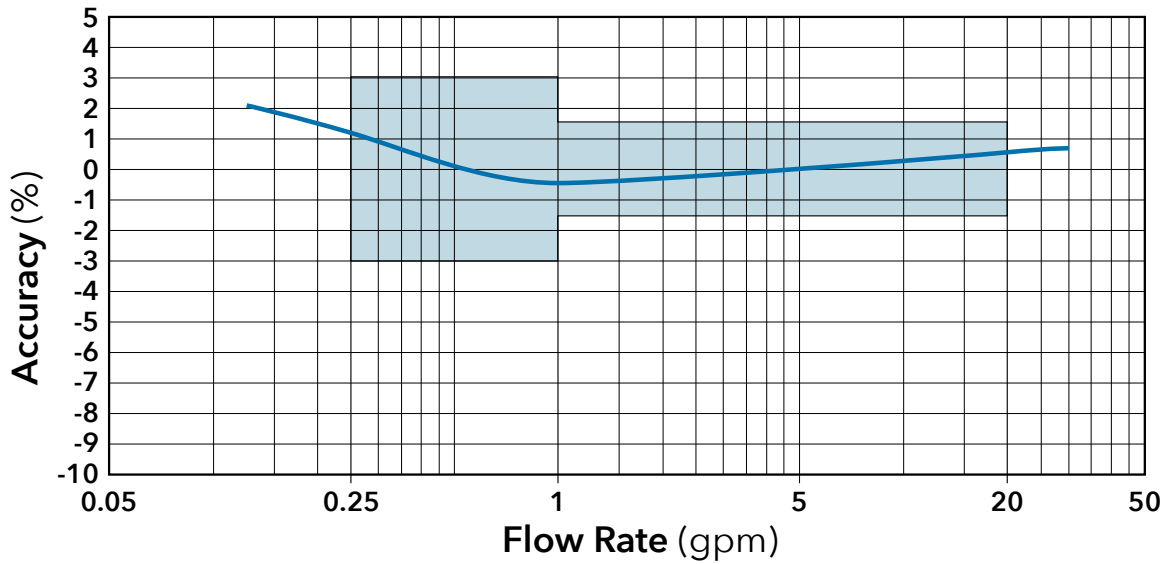
Max. Current: 100mA

Max. Voltage: 24 VAC/DC

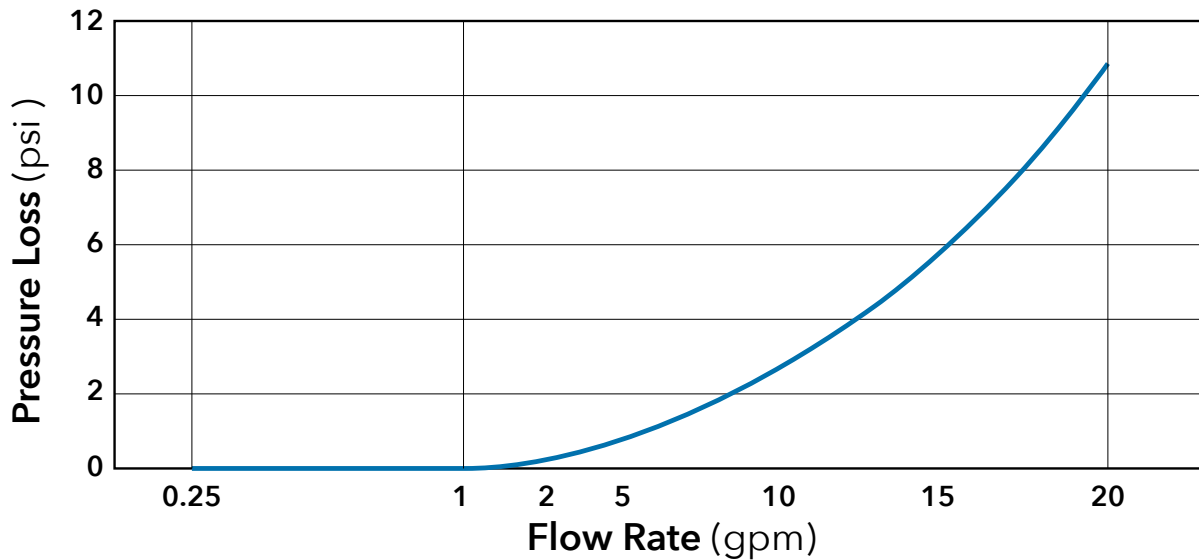
Cable Length: 9' standard (2000' maximum run)

MJ20 & MJ420 Multi-jet Water Meters

Accuracy



Pressure Loss



Dimensions & Weights (in inches & lbs.)

