

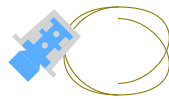
Quick Start Guide

The ultrasonic NextMeter Indoor (NM4-I) integrates advanced solid-state measuring technology with the NextCentury wireless platform. It is the first solid-state meter specifically designed for the submetering industry.

Package Contents

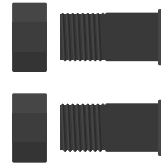


NM4-I



Wire Security

Additional Items Needed



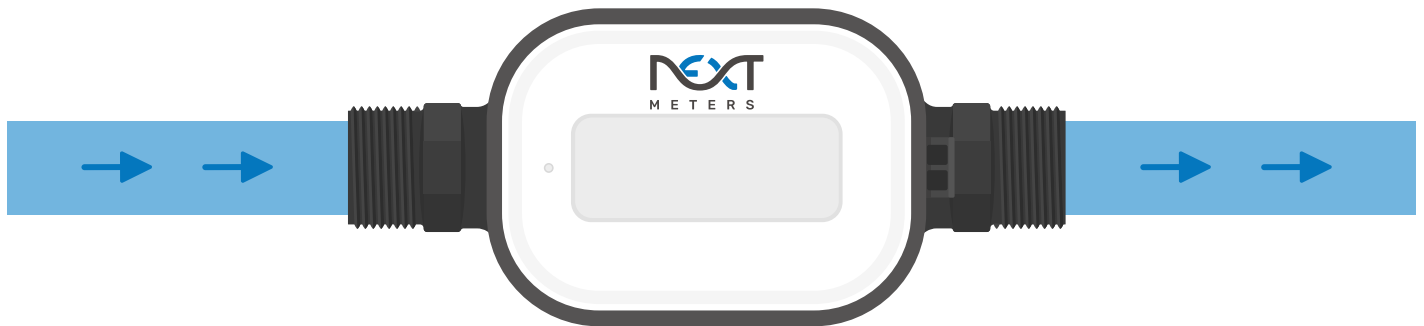
Couplings Set
(2 sets per NM4-I)



Gaskets
(2 gaskets per NM4-I)

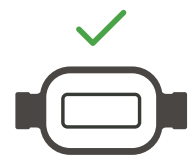
Water Flow

Ensure the flow of water matches the direction of the arrow indicators on the sides of the meter.



Orientation

The NextMeter Indoor can be installed in a horizontal or vertical position. Face the register for easy reading.



Additional Resources



For full installation guide, spec sheets, and additional resources, please visit: products.nextcenturymeters.com/nm4-i

Contact Information

Phone: (844) 538-8203

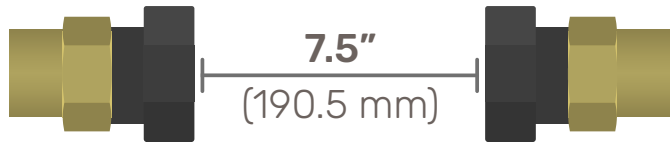
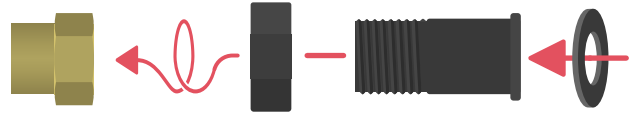
Email: support@nextmeters.com



Installation

The NextMeter Indoor should be installed by a locally approved installer as part of initial supply line and plumbing work.

- 1) Secure couplings set to water line and place gaskets in each end.



- 2) Ensure that the water line is parallel. Allow enough space for the meter.

- 3) Place meter and tighten both ends to max torque of 15 ft-lb.



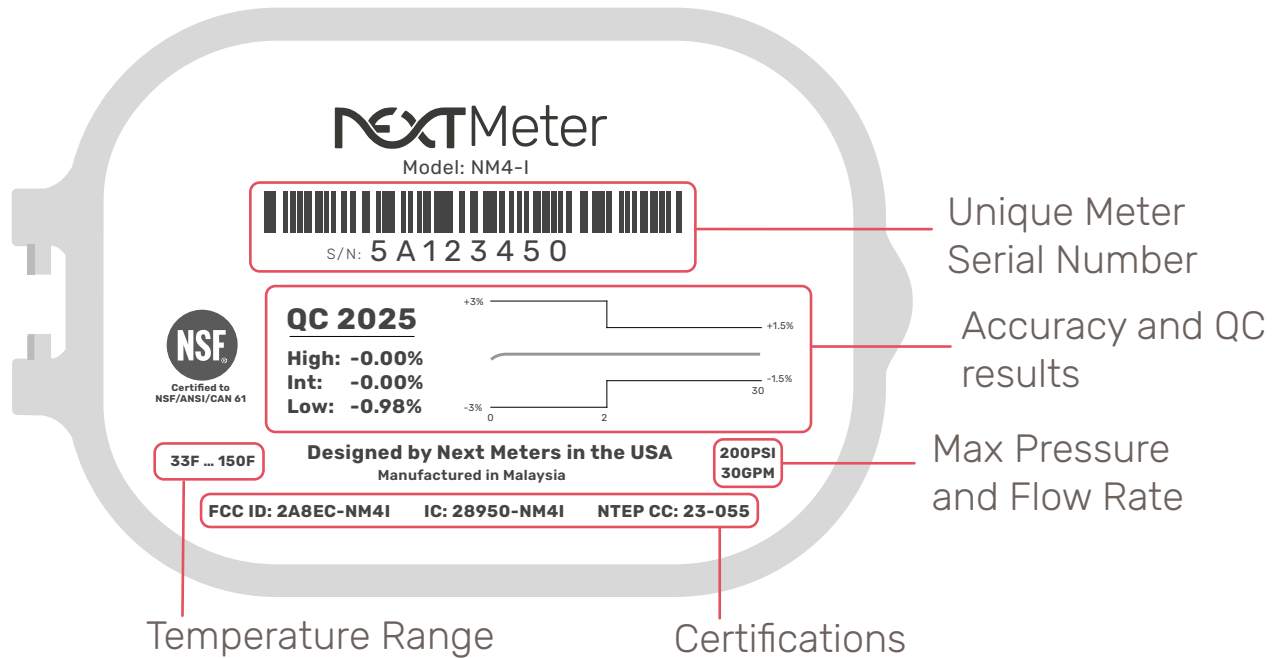
- 4) Pressurize line and check for leaks at each connection.



Information

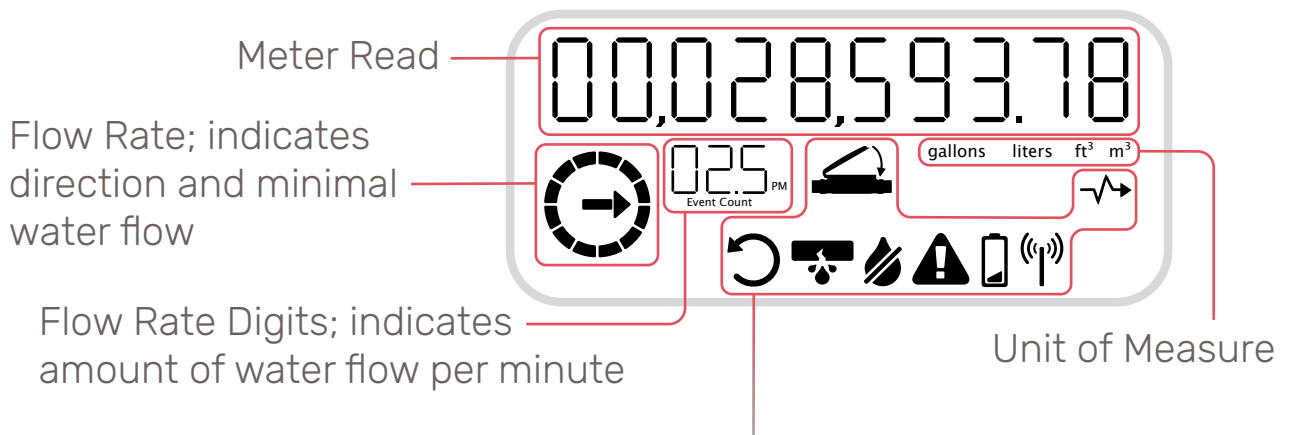
Meter Label

Detailed and meter-specific information can be found on the underside of the NextMeter register lid.



LCD Screen

Lift the register lid to activate the NextMeter LCD.




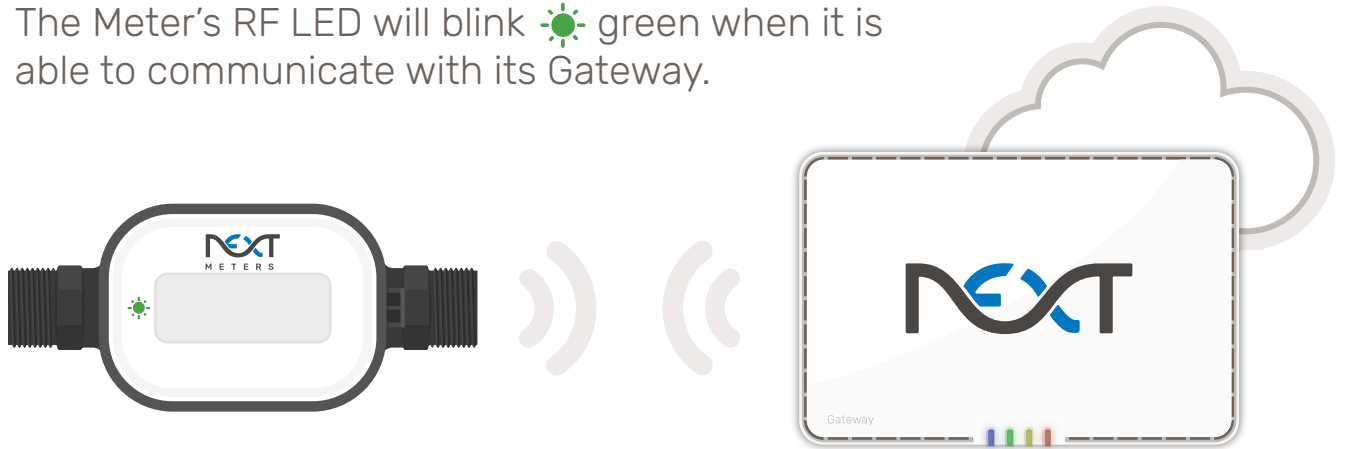
Reverse Flow; backflow of water detected	Burst pipe or severe water leak detected	Transmitting meter read data
LCD display is inactive; close lid, then open again to view	Freeze detected	Wired output; pulse is active
Water Leak detected	Battery has less than 10 months remaining	No water detected in the meter



Cloud Connected

Wireless Made Easy

When installing the NextMeter, you can instantly know if everything is working correctly by opening the NextMeter register lid. The Meter's RF LED will blink  green when it is able to communicate with its Gateway.



Programming

Programming the NextMeter can be completed quickly on the NextCentury Web or Mobile App, either ahead of time or on-site. To receive immediate feedback when opening the NextMeter lid, make sure the Gateway is programmed and connected to the NextCentury Cloud.

App Configuration

The NextCentury App allows for additional configuration options. Lift the register lid and connect to the meter in the App.



Mobile App Download

