

FLEXIBLE AXIS METER FAM

5/8" x 3/4"



PATENTED DESIGN FOR EXCLUSIVE GO ANYWHERE PERFORMANCE

Master Meter's Flexible Axis Meters boldly go where few other meters can — and save you money in the process. Ideal for residential applications, these accurate and quiet operating meters, fit challenging inside sets — under counters, between studs, along pipes run against walls. Regardless of pipe angle, our patented design ensures the measuring chamber can always be positioned horizontally for maximum performance and accuracy. Retrofit without costly re-plumbing and discover submetering is a practical reality in locations where installation costs were previously thought to be cost-prohibitive.

FEATURES & BENEFITS:

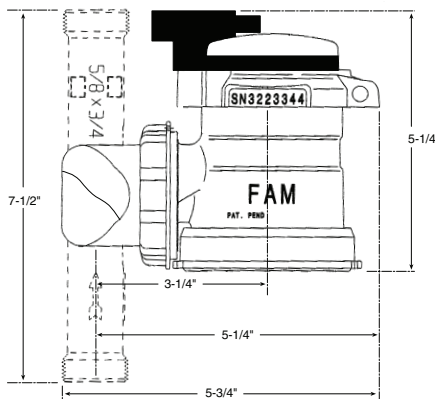
- * 360° Angle Installation Flexibility
- * Fits Tight Inside Space Challenges
- * Flushing or Testing Plug Eliminates Need for Jumper Tubes
- * Sustained Accuracy for Maximum Revenue Over Time
- * Engineered for Efficient Flow Patterns with Minimal Head Loss
- * Quiet Operation Ideal for Inside Residential Use
- * AMR/AMI Capable

READ:

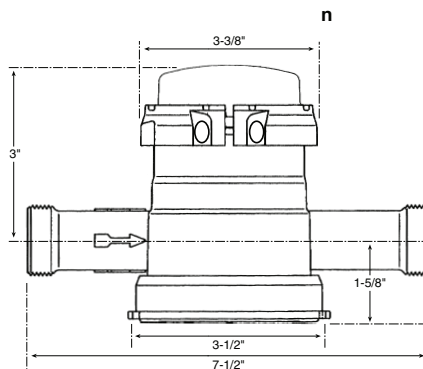
- * Direct Read/Manual

Dimensions

Vertical Installation



Horizontal Installation



Easy Install | 360° Angle Flexibility | Ideal for Submetering |
Quiet for Inside Set | AMR/AMI Capable

TECHNICAL SPECIFICATIONS:

Design/Operation - The flow tube provides a straight run of pipe upstream and downstream of the measuring element, conditioning flow for maximum accuracy. Installation flexibility allows the measuring chamber to always be positioned horizontally for high accuracy and long-life operation. A precision engineered measurement chamber and measuring elements deliver virtually noise-free operation critical for inside-set meters

Flow Tube - Polymer: Corrosion resistant lead-free construction consisting of proven tough, 40% glass-reinforced nylon rated polymer with burst resistance to 750 psi. Threaded and unthreaded meter coupling provides simple, effective installation options.

EnviroBrass: Optional unleaded EnviroBrass Flow tubes are available.

Main Case - The Flexible Axis Meter main case is constructed of lead-free, corrosion-resistant 50% glass-reinforced nylon.

Register - Standard Direct Read, Six wheel odometers are standard.

Register Sealing - All Direct read and DIALOG® registers are IP-68 rated, permanently sealed with a scratch resistant glass lens, stainless steel base and wrap-around gasket to prevent intrusion of dirt or moisture.

Register Units - Registration available in either U.S. gallons.

Magnetic Drive - A reliable, direct magnetic drive provides linkage between measurement element and register. No intermediate gearing is required; no gearing is exposed to water.

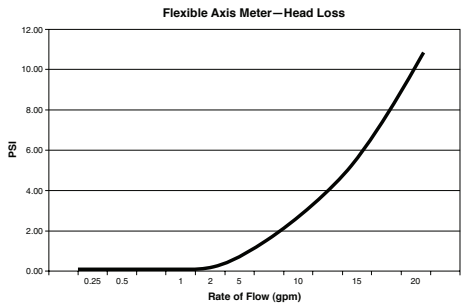
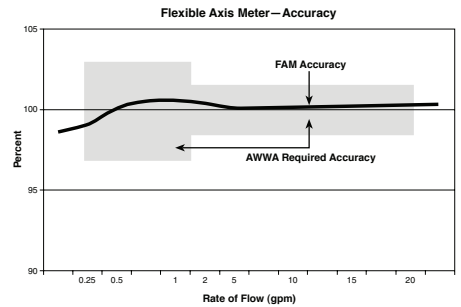
Test Circle - Large center sweep hand with one hundred (100) clearly marked gradations on the periphery of the dial face.

Low Flow/Leak Indicator - All DIALOG and Direct Read registers have a Center mounted indicator with high sensitivity resulting from direct one-to-one linkage to the measuring element.

Performance and Materials

CHARACTERISTIC	Flexible Axis Meter 5/8" x 3/4"
Operating Capacity	20 gpm
Maximum Rate for Continuous Duty	15 gpm
Maximum Pressure Loss at Maximum Flow	10.9 psi
Normal Flow Range (± 1-1 /2 %)	1 - 20 gpm
Minimum Flow(± 3%)	1/4 gpm
Maximum Working Pressure	150 psi
Maximum Working Temperature	120° F
Meter Casing Spuds, Nominal Thread Size	1"
Nominal Pipe Size	3/4"
Weight	2.2 lbs.
Materials: Main Case	Glass-reinforced Nylon
Measuring Chamber	Glass-reinforced Nylon
Register Construction	Glass lens, stainless steel case, rubber gasket

PERFORMANCE CURVES



Horizontal Installation